

# The **HON** **NP** *Plus* Circle

**Thursday, Sep 12<sup>th</sup> to  
Saturday, Sep 14<sup>th</sup> 2024**

**Inflammation in Hematology,  
Oncology, Nephrology and  
Pulmonology**

**LMU University Hospital · LMU Munich  
Großhadern Campus · Lecture Hall III  
Marchioninistraße 15 · 81377 München**

**Conference Website  
<https://HONPlusCircle.de>**

## Dear Colleagues,

It is both an honour and a pleasure for us to invite you to our first interdisciplinary HONPlus Circle Meeting in Munich. We are proud to be able to introduce internationally renowned experts from hematology, oncology, nephrology and pulmonology as speakers and chairs. The commitment of our partners from the Mayo Clinic in Rochester, Minnesota (USA) deserves special mention at this point.

In seven scientific sessions we are going to discuss cutting-edge developments at the interphase of hemato-oncologic, nephrologic and pulmonary conditions. Specifically, it is about the most recent research results and their potential translation into clinical practice. As our understanding of the pathogenesis of autoimmune diseases and malignancies has rapidly increased, clinical classification schemes have changed, and novel targeted immunologic and cellular therapies have become state-of-the-art options for patients. The success of these novel therapies is not without risks and potential complications; their recognition and clinical management in day-to-day practice will also be addressed in detail at this conference.

There will be ample opportunity for interdisciplinary exchange and personal networking at the HONPlus Circle Meeting, both on the LMU Klinikum campus and in the city of Munich.

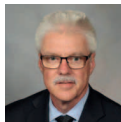
**Registration will be open from April 15<sup>th</sup> 2024 at <https://HONPlusCircle.de>.**

Be there! It will be both: exciting and educational. See you in September.

Yours



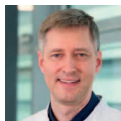
Prof. Michael Fischereeder  
Medical Clinic IV  
LMU Munich



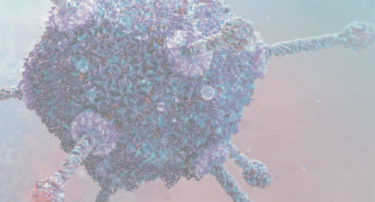
Prof. Ulrich Specks  
Mayo Clinic  
Rochester



Prof. Michael von Bergwelt  
Medical Clinic III  
LMU Munich



Dr. Ulf Schönermarck  
Conference Secretary



## Conference location

LMU Klinikum  
Großhadern Campus, Lecture Hall III  
Marchioninstraße 15, 81377 München

## Getting there

**Subway:** U6 to Großhadern stop

**Bus:** Line 266 to Klinikum Nord stop

**Car:** At Großhadern Campus paid parking spaces are available

## Registration fees

Early bird (until July 31<sup>st</sup> 2024): 70.00 €

Regular (from Aug 1<sup>st</sup> 2024): 110.00 €

Discounts for doctors in training

Free for medical students

## Conference website

<https://HONPluscircle.de>

## Scientific Initiators

Michael Fischereeder, MD, LMU Munich

Michael von Bergwelt, MD, LMU Munich

Ulrich Specks, MD, Mayo Clinic, Rochester

Ulf Schönermarck, MD, LMU Munich

Anke von Bergwelt, MD, LMU Munich

## Organizers

LUKON Health Communications

LUKON Publishers Ltd

Landsberger Straße 480 a

81241 Munich · Germany

Phone: +49 89 820 737-13

Fax: +49 89 820 737-17

E-Mail: [Events@Lukon.de](mailto:Events@Lukon.de)

## Program Thursday, September 12<sup>th</sup> 2024

14:30 *Opening industrial exhibition*

15:30 **Multidisciplinary Management  
of Complex Disease**

15:30 Welcome and introduction  
Michael Fischereeder, Michael von Bergwelt,  
Ulrich Specks

15:45 ANCA-associated vasculitis:  
from pathogenesis to targeted therapy  
Ulrich Specks

16:15 Pulmonary hypertension associated with  
myeloproliferative and kidney disease  
Hilary M. DuBrock

17:00 *Coffee break*

17:30 Lung transplantation in patients with  
pulmonary hypertension  
Jürgen Behr

18:00 Immunotherapy of cancer - from bench  
to bedside  
Sebastian Kobold

18:30 *Get together*

21:30 *End of day 1*

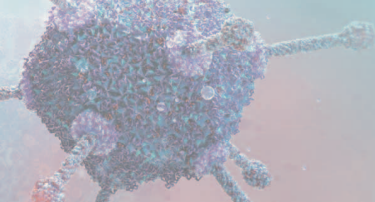
## Program Friday, September 13<sup>th</sup> 2024

08:00 Opening industrial exhibition

08:30 **Immunotherapy - from Vision to Standard of Care**

08:30 Lung cancer therapy in the age of immunotherapy  
Tobias Peikert

09:00 Immune-checkpoint inhibitor therapy in  
renal cell carcinoma  
Michael Staehler

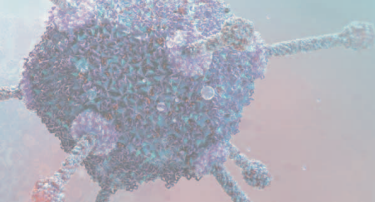


- 09:30 Immunotherapy for mesothelioma  
Tobias Peikert
- 10:00 Pathology of immune-checkpoint inhibitor therapy  
Mariam P. Alexander
- 10:30 ICU management of hemato-oncologic therapy complications  
Philippe R. Bauer
- 11:00 *Coffee break*
- 11:30 **Novel Classification in Kidney Disease Impacts Management**
- 11:30 Mapping the antigens of membranous nephropathy  
Sanjeev Sethi
- 12:10 Management of membranous nephropathy  
Fernando C. Fervenza
- 12:40 IgA nephropathy – same, same – or different?  
Jürgen Floege
- 13:10 *Lunch*
- 14:10 **New Approaches in Complex and Rare Renal Disease**
- 14:10 C3 Glomerulopathy: what is new?  
Sanjeev Sethi
- 14:30 Lupus nephritis – current and future treatment options  
Ali Duarte Garcia
- 15:00 Primary, secondary and genetic forms of FSGS: a clinical approach  
Fernando C. Fervenza
- 15:30 *Coffee break*
- 16:00 **Dealing with Complications of Novel Therapy**
- 16:00 Case Session
- 16:30 Renal pathology in monoclonal gammopathy  
Mariam P. Alexander

- 17:00 Critical care of immunocompromised patients  
Philippe R. Bauer
- 17:30 Avoiding collateral damage: precision immunotherapy for autoimmunity and cancer  
Maximilian F. König
- 18:00 *End of program*
- 19:00 *Congress Dinner (to be booked separately)*

### **Program Saturday, September 14<sup>th</sup> 2024**

- 08:30 *Opening industrial exhibition*
- 09:00 **Cellular Therapy Approaches**
- 09:00 CAR-T cell therapy in hemato-oncology  
Marion Subklewe
- 09:30 CAR-T cell therapy for autoimmune disease  
Andreas Mackensen
- 10:00 Cell therapy in infectious disease  
Tobias Feuchtinger
- 10:30 *Coffee break*
- 11:00 **From bench to bedside**
- 11:00 Case Session
- 11:30 APS reclassified: understanding the new criteria and the clinical impact  
Ali Duarte Garcia
- 12:00 Antigen-specific therapies for anti-phospholipid syndrome  
Maximilian F. König
- 12:30 Wrap up and Farewell  
Michael Fischereider, Michael von Bergwelt, Ulrich Specks
- 12:45 *Lunch*
- 13:45 *End of HONPlus Circle*



## Speakers and Chairs

### **Mariam P. Alexander**

MD, Professor of Laboratory Medicine & Pathology, Consultant Renal Pathology, Mayo Clinic, Rochester, MN, USA

### **Philippe R. Bauer**

MD, PhD, Professor of Medicine, Consultant Pulmonary & Critical Care, Mayo Clinic, Rochester, MN, USA

### **Jürgen Behr**

MD, Professor of Medicine, Director Medical Clinic V - Pulmonology, LMU University Hospital, LMU Munich

### **Michael von Bergwelt**

MD, PhD, Professor of Medicine, Director Medical Clinic III, Hematology and Oncology, LMU University Hospital, LMU Munich (Chair)

### **Anke von Bergwelt-Baldon**

MD, Senior physician at the Nephrology Center, Medical Clinic IV, LMU University Hospital, LMU Munich

### **Ali Duarte Garcia**

MD, Assistant Professor of Medicine, Consultant Rheumatology, Mayo Clinic, Rochester, MN, USA

### **Hilary M. DuBrock**

MD, Associate Professor of Medicine, Consultant Pulmonary & Critical Care, Mayo Clinic, Rochester, MN, USA

### **Fernando C. Fervenza**

MD, PhD, Professor of Medicine, Consultant Nephrology & Hypertension, Mayo Clinic, Rochester, MN, USA

### **Tobias Feuchtinger**

MD, Professor of Medicine, Professor of Medicine, Director Pediatric Hematology and Oncology, University Hospital Freiburg

### **Michael Fischeder**

MD, Professor of Medicine, Head of the Nephrology Center, Medical Clinic IV, LMU University Hospital, LMU Munich (Chair)

### **Jürgen Floege**

MD, Professor of Medicine, Director emeritus of the Medical Clinic II - Kidney and Hypertension Diseases, University Hospital of RWTH Aachen

### **Sebastian Kobold**

MD, Professor of experimental immune-oncology, Deputy Director of the Department of Clinical Pharmacology, LMU University Hospital, LMU Munich

### **Maximilian F. König**

MD, Assistant Professor of Medicine, Rheumatology, Johns Hopkins University, Baltimore, MD, USA

### **Andreas Mackensen**

MD, Professor of Medicine, Medical Clinic 5, Hematology and internal Oncology, University Hospital Erlangen

### **Tobias Peikert**

MD, Associate Professor of Medicine, Consultant Pulmonary & Critical Care, Mayo Clinic, Rochester, MN, USA

### **Ulf Schönermarck**

MD, Senior physician at the Nephrology Center, Medical Clinic IV, LMU University Hospital, LMU Munich

### **Sanjeev Sethi**

MD, PhD, Professor of Laboratory Medicine and Pathology, Consultant Renal Pathology, Mayo Clinic, Rochester, MN, USA

### **Ulrich Specks**

MD, Professor of Medicine, Consultant Pulmonary & Critical Care, Mayo Clinic, Rochester, MN, USA (Chair)

### **Michael Staehler**

MD, Professor of Medicine, Senior Physician at the Urological Clinic, LMU University Hospital, LMU Munich

### **Marion Subklewe**

MD, Professor of Medicine, Senior physician at the Medical Clinic III, Hematology and Oncology, LMU University Hospital, LMU Munich



The HONPlus Circle is a collaboration between LMU Klinikum, Munich, Germany and Mayo Clinic, Rochester, MN, USA



MAYO CLINIC

LUKON Health Communications  
LUKON Publishers Ltd

Landsberger Straße 480 a  
81241 Munich · Germany

Phone: +49 89 820 737-13

Fax: +49 89 820 737-17

E-Mail: [Events@Lukon.de](mailto:Events@Lukon.de)